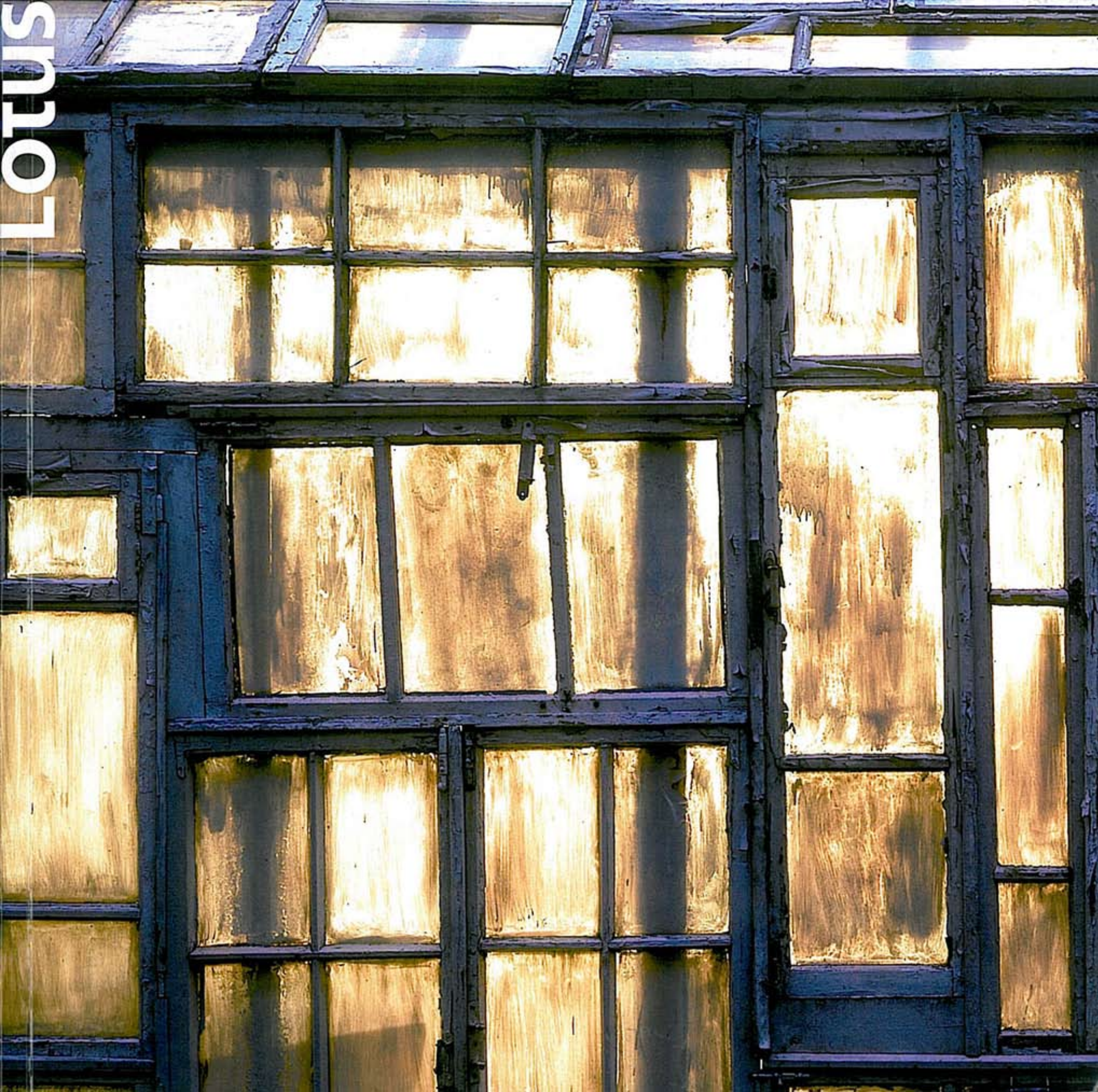
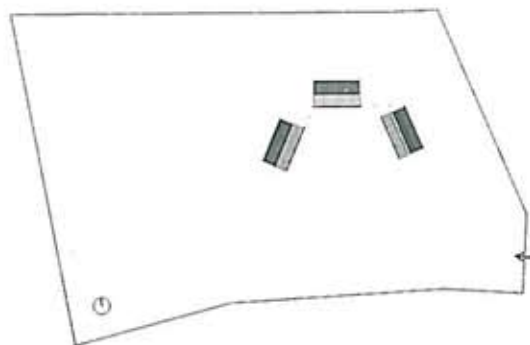


LOTUS



Lacaton & Vassal

Casa-villaggio al mare, Keremma, Francia
House-Village by the Sea, Keremma, France



Lacaton & Vassal
Maison a Keremma
Keremma, Tréflex, France, 2005

Anne Lacaton & Jean Philippe Vassal
Con/With: David Duchein, Mathieu Laporte,
Sylvain Menaud, Rafaël Falcon
Coll.: G. Petibon
Foto di/Photos by: Philippe Ruault

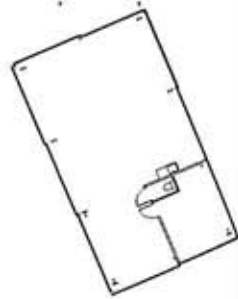
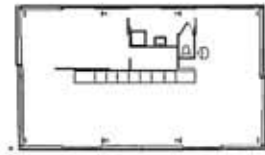




Vedute degli edifici e pianta con i pannelli delle facciate chiusi
Views of the buildings and plan with the panels of the façades closed

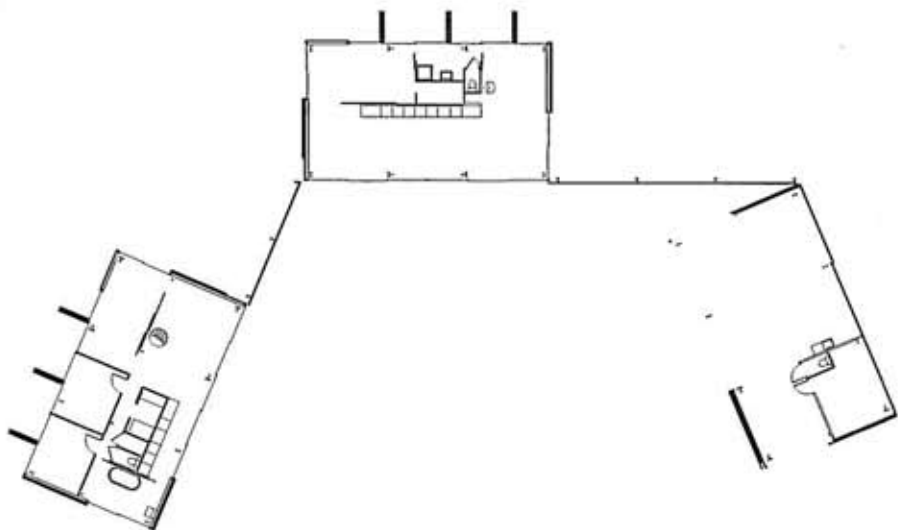
L'abitazione è situata in un'area boscata, a poche decine di metri dal mare. Si articola in tre elementi separati, disposti lungo un arco di cerchio, convesso a nord, lato esposto al vento, concavo invece verso sud, generando così uno spazio esterno protetto.

The house is situated in a wooded area, a few tens of meters from the sea. It is divided into three separate elements, arranged along the arc of a circle, convex to the north, the side exposed to the wind, and concave to the south, generating a sheltered external space.



pannelli chiusi/closed panels





pannelli aperti/open panels



Scorci degli edifici e pianta con i pannelli delle facciate aperti

Views of the buildings and plan with the panels of the façades open

Il sistema di chiusura è realizzato con pannelli scorrevoli che, quando aperti, collegano ogni volume a quello adiacente, determinando così relazioni variabili tra gli edifici, l'interno e l'esterno.

The system of closure is made out of sliding panels that, when open, connected each volume to the adjacent one, thereby determining variable relationships between the buildings, the interior and the exterior.



Scorci degli interni, pianta e sezioni degli edifici
Views of the interiors, plan and sections of the buildings

I tre volumi hanno la stessa forma e dimensione; si differenziano solo per pochi dettagli: la disposizione interna, i materiali della copertura e le chiusure in facciata.

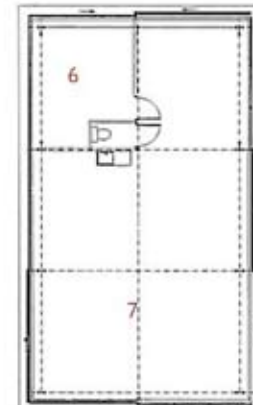
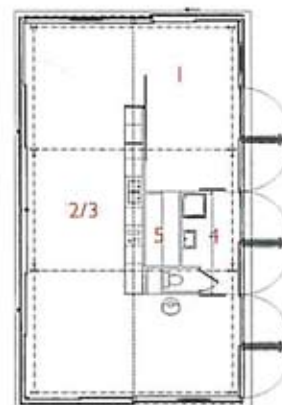
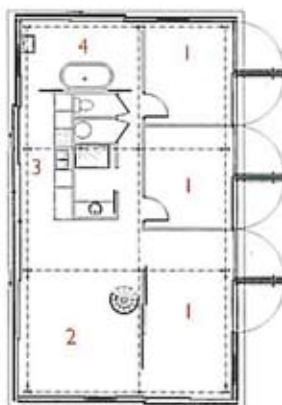
The three volumes have the same shape and dimension; they differ only in a few details: the internal layout, the materials of the roof and the closures on the façade.



maison 1

maison 2

maison 3



- 1. camera/room
- 2. soggiorno/living room
- 3. cucina/kitchen
- 4. bagno/bathroom
- 5. guardaroba/dressing room
- 6. superficie pavimentata/paved surface
- 7. sabbia/sand

